



# Climate Justice: Vulnerability and Resilience to COVID-19 and the Climate Crisis

April 29, 2020

Thank you for joining the webinar.

*\* We will begin shortly. \**

# Housekeeping

- ▶ If you have problems with the webinar audio, you can join by phone at 1-646-558-8656; Code: 687-270-400#
- ▶ All participants will be muted during the webinar.
- ▶ If you have questions during the presentation, please type them into the Q&A box located at the bottom of your screen. Your questions will be visible to the moderator and presenters only.
- ▶ The webinar is being recorded and will be shared shortly after the event.
- ▶ Members of the press may be joining today's webinar.

# What is CPR?



- ▶ **Vision:** CPR is a “think-and-do tank” helping to build thriving communities on a resilient planet.
- ▶ **Mission:** CPR pursues a strategic agenda that emphasizes education, advocacy, and community collaboration.
- ▶ CPR operates with a network of 60+ Member Scholars who are leaders in various legal academic fields, and a professional staff of policy analysts, communication experts, and others.
- ▶ We work together on a variety of programs—national and regional—all dedicated to the idea that government safeguards and other regulations are a key to social justice and planetary health.

# Climate Justice Webinar Series

► Through this series, CPR aims to convey:

1. The impacts of the climate crisis are not equally distributed. Policymakers must recognize that people whose lives have been shaped by structural racism and other historic inequities are most adversely affected.
2. Existing legal and policy tools can be used to protect and address climate-driven impacts for vulnerable communities, and promote social justice.

# Presenters



**Darya Minovi, MPH**  
**Moderator**  
Policy Analyst, Center  
for Progressive Reform



**Daniel Farber, JD**  
CPR Member Scholar  
& Professor, Univ. of  
California-Berkeley  
Law School



**Monica Schoch-Spana, PhD**  
Senior Scholar and  
Scientist, Johns Hopkins  
Bloomberg School of Public  
Health



**Aaron Bernstein, MD, MPH**  
Director, Center for  
Climate, Health, and the  
Global Environment,  
Harvard T.H. Chan School of  
Public Health

1. How are you approaching the ongoing COVID-19 pandemic from the lens of your discipline?

The background of the slide features abstract, overlapping geometric shapes in various shades of green, ranging from light lime to dark forest green. These shapes are primarily located on the right side and bottom of the frame, creating a modern, layered effect. The main text is positioned on the left side of the slide, set against a plain white background.

2. What are some of the disparate impacts to vulnerable populations from COVID-19?

3. In recent publications, you've discussed the Stafford Act and other federal powers the President can invoke to better respond to COVID-19. Can you describe what those are, and how they could be used to protect vulnerable communities?



## PRESIDENTIAL POWER IN A PANDEMIC

Daniel Farber [Bio](#)

March 18, 2020

*Originally published on Legal Planet. Reprinted with permission.*

Now that President Trump has belatedly declared a [national emergency](#), what powers does he have to respond to the coronavirus pandemic? There has been a lot of talk about this on the Internet, some of it off-base.



4. New research came out of the Harvard connecting PM<sub>2.5</sub> levels to an elevated mortality rate from COVID-19. Could you share some of the ways that pollution and environmental degradation can increase community vulnerability to COVID-19?



HARVARD UNIVERSITY

[HARVARD.EDU](https://www.harvard.edu)

### COVID-19 PM<sub>2.5</sub>

*A national study on long-term exposure to air pollution and COVID-19 mortality in the United States*

5. Recently, the Environmental Protection Agency set the stage for weakening power plant mercury and air toxics standards. Is the agency justified in this determination, and what are the implications of this rollback on communities located near these facilities?



Source: Associated Press

6. One of the major determinants of our ability to respond to COVID-19 is the capacity of our health care system. What gaps has this pandemic revealed about the U.S. health care system, and how can we build resilience to future outbreaks?

7. Could you share more about your work on self-assessment tools for community resilience to disasters, and how they might be used to inform the ongoing debate around “reopening the economy”?

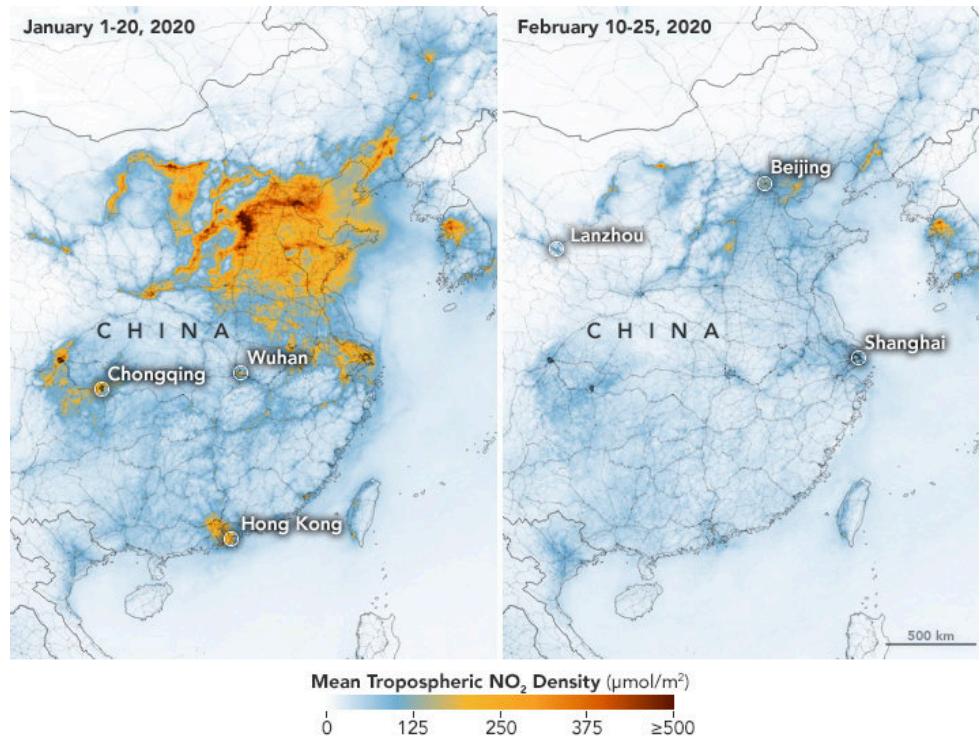
8. How can states and locales affected by fire and hurricane season best prepare for potential evacuations and disaster recovery if social distancing drags on through the year?



Source: Associated Press

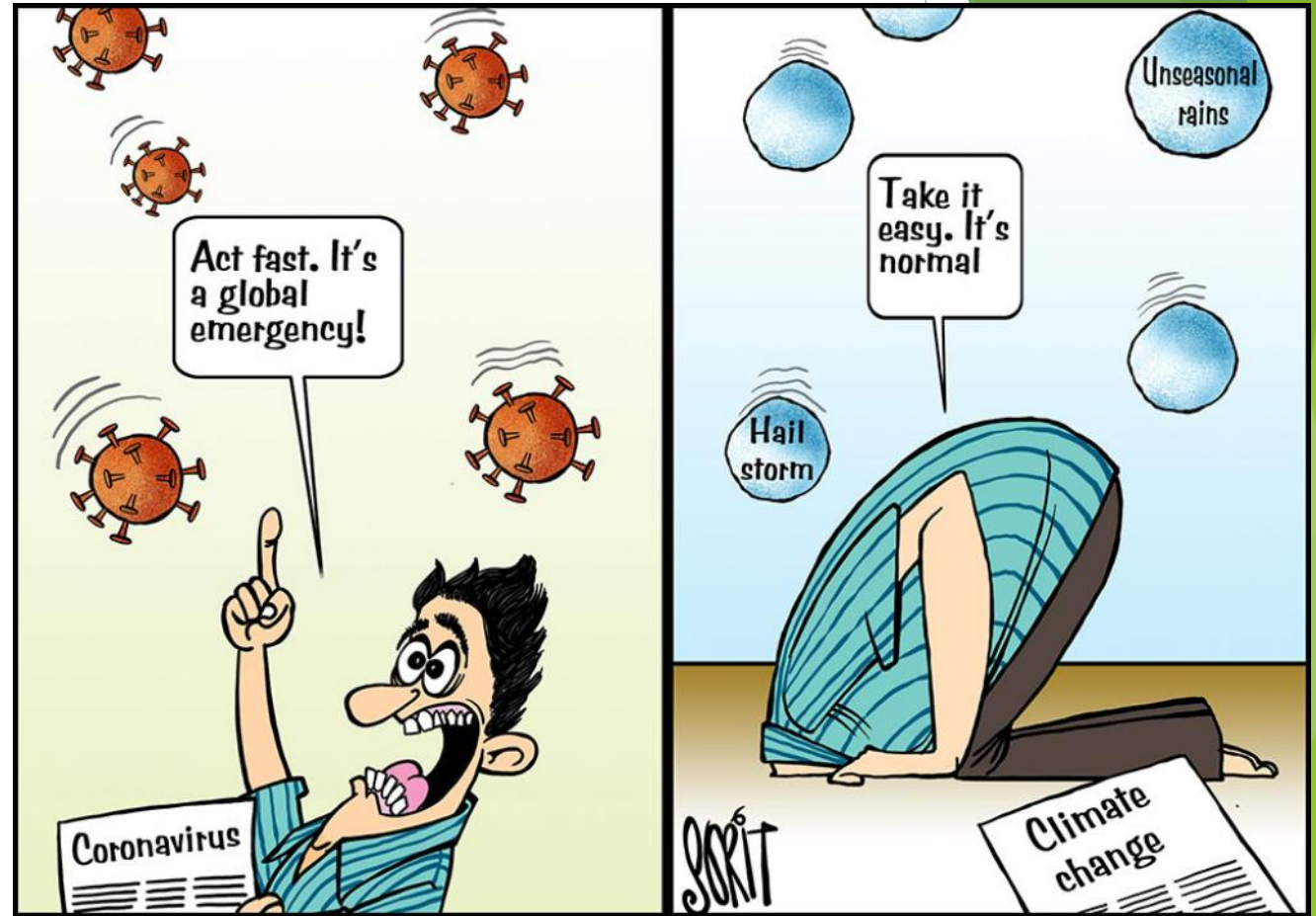


9. From a policy making perspective, are there ways to build climate resilience into our response to COVID-19 so we don't return to “business as usual”?



Source: NASA Earth Observatory

10. What lessons can be drawn from our response to COVID-19 to yield swift, collective action on climate change?



11. What do you believe is the key investment that must be made to protect vulnerable communities and build resilience, whether in response to COVID-19 or the climate crisis?



# Questions?

Please type your questions in the Q&A box.

# Thank you for joining us!

**Upcoming CPR webinar: Healthy soils and just transition, June 3, 6-7:30pm ET**

Please complete the survey on your screen after exiting!

For more from CPR, visit at [progressivereform.org](https://progressivereform.org)  
or follow us at [@CPRBlog](https://twitter.com/CPRBlog).